

MR-F4-1000-C(HI)

FMR Series



Key Feature

- Narrow body, carrying goods in fork type, supports customized gantry and fork dimension.
- Adopts laser slam navigation to achieve accurate positioning.
- Flexible motion control, patented driver design, max operating speed is up to 1.2m/s.
- Intelligent/independent power management, low-power autonomous charging, maintenance-free lithium battery, safe and pollution-free.
- Standard pallet carrying, which supports lifting, carrying, unloading etc. of goods rated at not less than 1000kg.
- Adopts display screen and indicator to show device status in real time.
- Wireless communication. Supports WIFI network communication and seamless roaming to achieve barrier-free operation in the network coverage area.

Typical Application

Warehousing and logistics industries include e-Commerce, electronics manufacturing, tobacco, medicine.

Specification

	Model	MR-F4-1000-C(HI)
General Parameter	Dimension (l1*b1*h1)	1640*990*1990 mm
	Weight (Including battery)	713 kg
	Rated load (Q)	1000 kg
	Load center distance (C)	600 mm
	Wheelbase (y)	991.3 mm
	Max. lifting height (h3+h13)	2031 ± 3 mm
	Max. gantry height during operation (h4)	2682 mm
	Fork-ground distance after descending (h13)	81±3 mm
	Fork dimension (s/e/l)	60/180/1220 mm
	Forklift outer width (b5)	680 mm
	Min. ground clearance (m2)	16 mm
	Adaptable pallet dimension	1200*1000 mm
	Navigation laser scanning height (h15)	1950 mm
	Min. turning radius (Wa)	1178 mm
	Min. aisle width (1200*1000 mm pallet)	2052 mm



Motion Performance	Operating speed(rated/empty)	1.0/1.2 m/s
	Positioning accuracy	± 10mm
	Angle accuracy	± 1°
	Repeated positioning accuracy	± 10 mm
	Max. climbing gradient(rated load/ empty load)	3%/5%
	Fork lifting speed (rated load/ empty load)	100/135 mm/s
	Fork descending speed (rated load/empty load)	130/100 mm/s
	Mode of motion	Steering wheel driving, supports going forward/backward, arc turning and in-place rotation
Battery	Rated voltage	48 V
	Capacity	44 Ah
	Charge cycle	1500 times (fully discharge & charge)
	Operating time at rated condition	6~8 h
	Charge time	2 h
	Charge mode	Charging on the side of FMR
Safety Protection	Obstacle avoidance laser	Available
	Drive recorder	Optional
	Bumper strip detection	Available
	Pallet in-position detection	Available
	Fork tip collision detection	Available
	Emergency stop button	Available
	Sound-light alarm	Available
Others	Driving mode	Front-wheel driving and turning
	Screen	Available
	Navigate mode	Laser slam (reflector)
	Manual operation	Manual operator(Optional) or APP
	Working noise	<75dB

Charging Station Model

CH-48/30S

HIKROBOT[®]

Hangzhou Hikrobot Technology Co., Ltd.

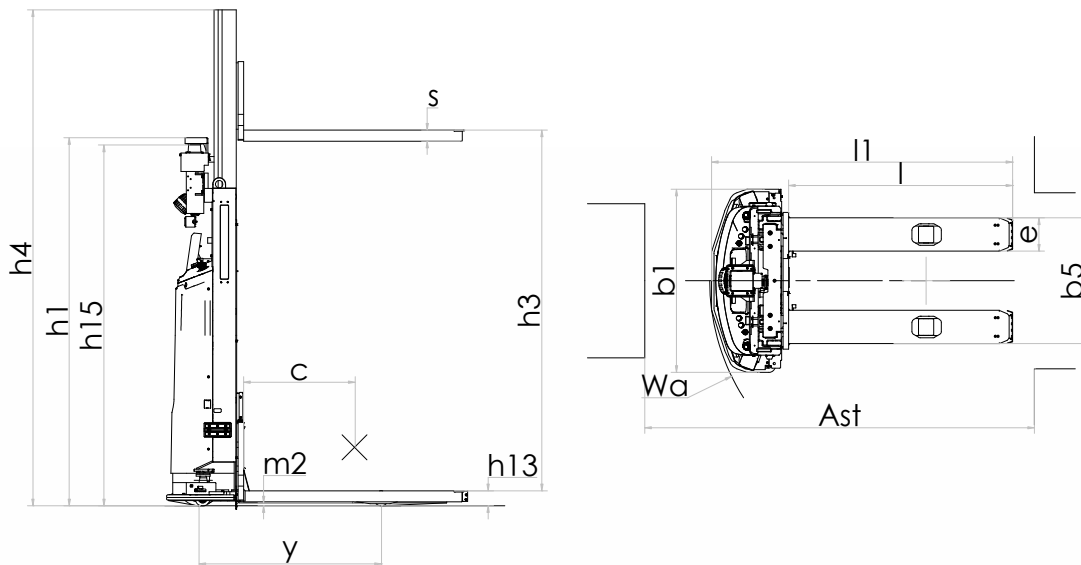
No.399 Danfeng Road, Binjiang District, Hangzhou 310052, China.

en.hikrobotics.com

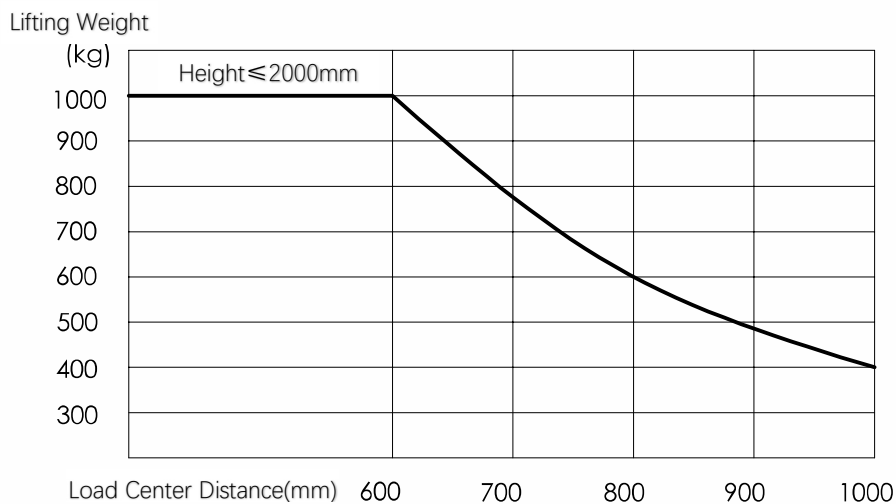
Copyright Hikrobot

Hangzhou Hikrobot Technology Co., Ltd. All Rights Reserved. Hangzhou Hikrobot Technology does not tolerate any infringement. Any organization or individual may not imitate or reproduce in whole or in part of the content. The data herein is based on Hikrobot's internal evaluation. Actual data may vary depending on specific configuration and operating condition. The information herein is subject to change without notice All the content has been checked conscientiously. Nevertheless, Hikrobot shall not be liable to damages resulting from errors, inconsistencies or omissions.

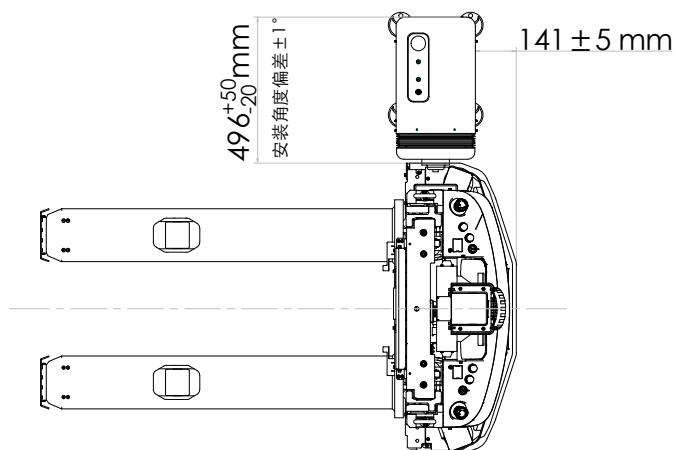
Dimension



Load Curve



Charge Station Position



HIKROBOT

Hangzhou Hikrobot Technology Co., Ltd.

No.399 Danfeng Road, Binjiang District, Hangzhou 310052, China.

en.hikrobotics.com

Copyright Hikrobot

Hangzhou Hikrobot Technology Co., Ltd. All Rights Reserved. Hangzhou Hikrobot Technology does not tolerate any infringement. Any organization or individual may not imitate or reproduce in whole or in part of the content. The data herein is based on Hikrobot's internal evaluation. Actual data may vary depending on specific configuration and operating condition. The information herein is subject to change without notice All the content has been checked conscientiously. Nevertheless, Hikrobot shall not be liable to damages resulting from errors, inconsistencies or omissions.