

Electric powered forklift 2.0 - 3.5 ton

TOYOTA
TRIGO⁸⁰



Electric powered forklift 2.0 - 2.5 ton

Truck specifications					8FBMKT20	8FBMKT25	8FBMT25
Identification	1.1	Manufacturer			TOYOTA	TOYOTA	TOYOTA
	1.2	Model			8FBMKT20	8FBMKT25	8FBMT25
	1.3	Drive			Electric	Electric	Electric
	1.4	Operator type			Rider seated	Rider seated	Rider seated
	1.5	Load capacity/rated load	Q	kg	2000	2500	2500
	1.6	Load centre	c	mm	500	500	500
	1.8	Load distance, centre of drive axle to fork	x	mm	420	420	420
	1.9	Wheelbase	y	mm	1431	1575	1720
Weight	2.1	Service weight		kg	4198	4553	4809
	2.2	Axle load, with load, front/rear		kg	5358/841	6201/852	6253/1056
	2.3	Axle load, without load, front/rear		kg	2072/2126	2241/2312	2415/2394
Tyres	3.1	Tyre - pneumatic (P), pneumatic shaped cushion (SE), solid rubber (R)			SE	SE	SE
	3.2	Tyre size, front			23x9-10	23x9-10	23x9-10
	3.3	Tyre size, rear			18x7-8	18x7-8	18x7-8
	3.5	Wheels, number front/rear (x=driven wheels)			2x/2	2x/2	2x/2
	3.6	Track width, front	b ₁₀	mm	986	986	986
	3.7	Track width, rear	b ₁₁	mm	940	940	940
	Dimensions	4.1	Tilt of mast/fork carriage forward/backward	α/β	deg	5/8	5/8
4.2		Height, mast lowered	h ₁	mm	2235	2235	2235
4.3		Free lift	h ₂	mm	120	120	120
4.4		Lift	h ₃	mm	3300	3300	3300
		Lift height	h ₂₃	mm	3340	3340	3340
4.5		Height, mast extended	h ₄	mm	3999	3999	3999
4.7		Height of overhead guard (cab)	h ₆	mm	2215	2215	2215
4.8		Seat height/stand height	h ₇	mm	1143	1143	1143
4.12		Coupling height	h ₁₀	mm	500	500	500
4.19		Overall length	l ₁	mm	3140	3284	3429
4.20		Length to face of forks	l ₂	mm	2140	2284	2429
4.21		Overall width	b ₁	mm	1195	1195	1195
4.22		Fork dimensions	s/e/l	mm	40x100x1000	40x100x1000	40x100x1000
4.23		Fork carriage DIN 15 173, class/type A, B			IIA	IIA	IIA
4.24		Fork-carriage width	b ₃	mm	1070	1070	1070
4.31		Ground clearance, with load, below mast	m ₁	mm	95	95	95
4.32		Ground clearance, centre of wheelbase	m ₂	mm	127	127	127
4.33		Aisle width for pallets 1000 x 1200 crossways	A _{st}	mm	3495	3625	3759
4.34	Aisle width for pallets 800 x 1200 lengthways	A _{st}	mm	3692	3823	3958	
4.35	Turning radius	W _a	mm	1872	2003	2138	
4.36	Internal turning radius	b ₁₃	mm	504	518	532	
Performance data	5.1	Travel speed, with/without load		km/h	19/20	19/20	19/20
	5.2	Lift speed, with/without load		m/s	0,50/0,63	0,46/0,63	0,46/0,63
	5.3	Lowering speed, with/without load		m/s	0,56/0,45	0,56/0,48	0,56/0,48
	5.5	Drawbar pull, with/without load		N	8900	8900	8900
	5.6	Max. drawbar pull, with/without load		N	19000	19000	19000
	5.7	Gradeability, with/without load		%	19/29	16/28	15/25
	5.8	Max. gradeability, with/without load		%	27/29	25/29	24/29
	5.9	Acceleration time, with/without load		s	4,4/4,2	4,5/4,2	4,6/4,2
	5.10	Service brake			Mechanical/hydraulic	Mechanical/hydraulic	Mechanical/hydraulic
	Electric motor	6.1	Drive motor rating S2 60 min		kW	20	20
6.2		Lift motor rating S3 15%		kW	25,5	25,5	25,5
6.3		Battery acc. to DIN 43 531/35/36 A, B, C, no			43536 A	43536 A	43536 A
6.4		Battery voltage, nominal capacity K5		V/Ah	80/420	80/560	80/700
6.5		Battery weight		kg	1238	1558	1863
Others	8.1	Type of drive control			AC	AC	AC
	8.2	Operating pressure for attachments		bar	160	160	160
	8.3	Oil volume for attachments		l/min	40	40	40
	8.4	Sound level at the driver's ear according to EN 12 053		dB(A)	68,8	68,8	68,8

Performance data and dimensions are nominal and subject to tolerances.
 Specifications are subject to change without notice.
 Please obtain the latest specifications before contracting products.

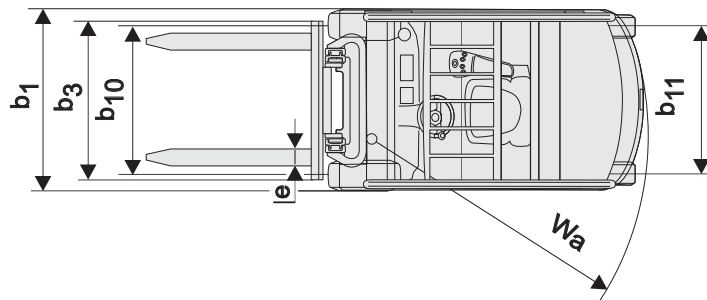
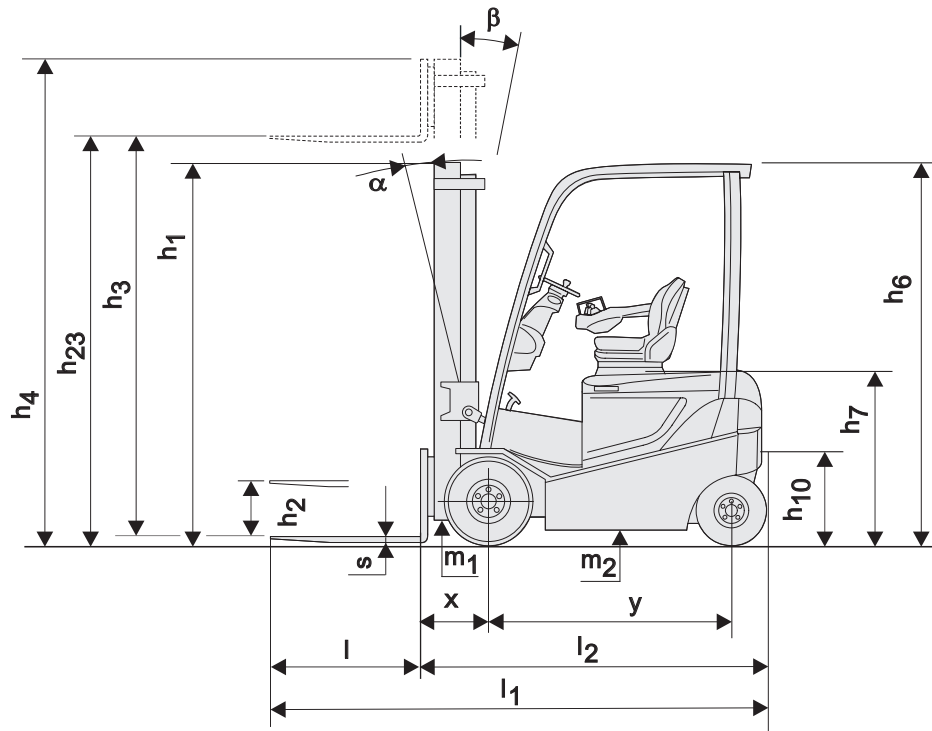
Most dimensions and rated capacities

Model			V					FV				FW				FSV					FSW						
8FBMKT20, 8FBMKT25, 8FBMKT25	Lift height	h_{23}	3040	3340	3740	4040	4540	3040	3340	3740	4040	3040	3340	3740	4040	4340	4740	5040	5540	6040	6540	4400	4740	5040	5540	6040	6540
	Lift	h_3	3000	3300	3700	4000	4500	3000	3300	3700	4000	3000	3300	3700	4000	4300	4700	5000	5500	6000	6500	4360	4700	5000	5500	6000	6500
	Height, mast lowered	h_1	2135	2235	2585	2835	3085	2135	2235	2585	2835	2135	2255	2505	2655	2135	2235	2395	2585	2835	3085	2085	2205	2305	2505	2655	2855
	Height, mast extended ¹⁾	h_4	3699	3999	4399	4699	5199	3674	3974	4374	4674	3595	3895	4365	4605	4999	5399	5699	6199	6699	7199	4965	5305	5605	6105	6605	7105
	Height, mast extended ²⁾	h_4	4200	4500	4900	5200	5700	4200	4500	4900	5200	4200	4500	4900	5200	5500	5900	6200	6700	7200	7700	5560	5900	6200	6700	7200	7700
	Free lift, without load backrest	h_2	120	120	120	120	120	1511	1611	1961	2211	1540	1660	1840	2050	1476	1576	1736	1926	2176	2426	1480	1600	1700	1900	2050	2250
Free lift, with load backrest	h_2	120	120	120	120	120	985	1085	1435	1685	935	1055	1305	1455	975	1075	1235	1425	1675	1925	885	1005	1105	1305	1455	1655	

1) Without load backrest.

2) With load backrest; Height of standard load backrest is 1200 mm.

Pneumatic shaped cushion tyre			V					FV				FW				FSV					FSW						
8FBMKT20	Tilt range, forward	deg	4,5	4,5	4,5	4,5	4,5	4,5	4,5	4,5	4,5	4,5	4,5	4,5	4,5	4,5	4,5	4,5	4,5	4,5	4,5	4,5	4,5	4,5	4,5	4,5	4,5
	Tilt range, backward	deg	8	8	8	8	6	8	8	8	8	8	8	8	8	6	6	6	6	6	6	6	6	6	6	6	6
	Load capacity at 500 mm LC	kg	2000	2000	2000	2000	2000	2000	2000	2000	2000	2000	2000	2000	2000	2000	2000	1985	1910	1710	1355	2000	2000	1980	1910	1710	1355
8FBMKT25	Tilt range, forward	deg	4,5	4,5	4,5	4,5	4,5	4,5	4,5	4,5	4,5	4,5	4,5	4,5	4,5	4,5	4,5	4,5	4,5	4,5	4,5	4,5	4,5	4,5	4,5	4,5	4,5
	Tilt range, backward	deg	8	8	8	8	6	8	8	8	8	8	8	8	8	6	6	6	6	6	6	6	6	6	6	6	6
	Load capacity at 500 mm LC	kg	2500	2500	2500	2500	2500	2500	2500	2500	2500	2500	2500	2500	2500	2480	2420	2380	2080	1660	1400	2480	2420	2380	2080	1660	1400
8FBMKT25	Tilt range, forward	deg	4,5	4,5	4,5	4,5	4,5	4,5	4,5	4,5	4,5	4,5	4,5	4,5	4,5	4,5	4,5	4,5	4,5	4,5	4,5	4,5	4,5	4,5	4,5	4,5	4,5
	Tilt range, backward	deg	8	8	8	8	6	8	8	8	8	8	8	8	8	6	6	6	6	6	6	6	6	6	6	6	6
	Load capacity at 500 mm LC	kg	2500	2500	2500	2500	2500	2500	2500	2500	2500	2500	2500	2500	2500	2500	2500	2500	2500	2000	1950	2500	2500	2500	2500	2000	1950



Electric powered forklift 3.0 ton

Truck specifications					8FBMKT30	8FBMT30
Identification	1.1	Manufacturer			TOYOTA	TOYOTA
	1.2	Model			8FBMKT30	8FBMT30
	1.3	Drive			Electric	Electric
	1.4	Operator type			Rider seated	Rider seated
	1.5	Load capacity/rated load	Q	kg	3000	3000
	1.6	Load centre	c	mm	500	500
	1.8	Load distance, centre of drive axle to fork	x	mm	440	440
	1.9	Wheelbase	y	mm	1575	1720
	Weight	2.1	Service weight		kg	5199
2.2		Axle load, with load, front/rear		kg	7236/964	7280/881
2.3		Axle load, without load, front/rear		kg	2443/2756	2638/2524
Tyres	3.1	Tyre: C=Cushion, SE=Super elastic, PN=Pneumatic, TW=Twin			SE	SE
	3.2	Tyre size, front			23x10-12	23x10-12
	3.3	Tyre size, rear			18x7-8	18x7-8
	3.5	Wheels, number front/rear (x=driven wheels)			2x/2	2x/2
	3.6	Track width, front	b ₁₀	mm	946	946
	3.7	Track width, rear	b ₁₁	mm	940	940
	Dimensions	4.1	Tilt of mast/fork carriage forward/backward			α/β deg
4.2		Height, mast lowered			h ₁ mm	2395
4.3		Free lift			h ₂ mm	125
4.4		Lift			h ₃ mm	3300
		Lift height			h ₂₃ mm	3345
4.5		Height, mast extended			h ₄ mm	4045
4.7		Height of overhead guard (cab)			h ₆ mm	2215
4.8		Seat height/stand height			h ₇ mm	1143
4.12		Coupling height			h ₁₀ mm	500
4.19		Overall length			l ₁ mm	3334
4.20		Length to face of forks			l ₂ mm	2334
4.21		Overall width			b ₁ mm	1195
4.22		Fork dimensions			s/e/l mm	45x100x1000
4.23		Fork carriage DIN 15 173, class/type A, B				IIIA
4.24		Fork-carriage width			b ₃ mm	1070
4.31		Ground clearance, with load, below mast			m ₁ mm	95
4.32		Ground clearance, centre of wheelbase			m ₂ mm	127
4.33		Aisle width for pallets 1000 x 1200 crossways			A _{st} mm	3674
4.34	Aisle width for pallets 800 x 1200 lengthways			A _{st} mm	3872	
4.35	Turning radius			W _a mm	2032	
4.36	Internal turning radius			b ₁₃ mm	518	
Performance data	5.1	Travel speed, with/without load			km/h	19/20
	5.2	Lift speed, with/without load			m/s	0,40/0,55
	5.3	Lowering speed, with/without load			m/s	0,56/0,45
	5.5	Drawbar pull, with/without load			N	8900
	5.6	Max. drawbar pull, with/without load			N	19000
	5.7	Gradeability, with/without load			%	13/23
	5.8	Max. gradeability, with/without load			%	21/29
	5.9	Acceleration time, with/without load			s	4,7/4,2
	5.10	Service brake				Mechanical/hydraulic
	Electric motor	6.1	Drive motor rating S2 60 min			kW
6.2		Lift motor rating S3 15%			kW	25,5
6.3		Battery acc. to DIN 43 531/35/36 A, B, C, no				43536 A
6.4		Battery voltage, nominal capacity K5			V/Ah	80/560
6.5		Battery weight			kg	1558
Others	8.1	Type of drive control				AC
	8.2	Operating pressure for attachments			bar	160
	8.3	Oil volume for attachments			l/min	40
	8.4	Sound level at the driver's ear according to EN 12 053			dB(A)	68,8

Performance data and dimensions are nominal and subject to tolerances.
 Specifications are subject to change without notice.
 Please obtain the latest specifications before contracting products.

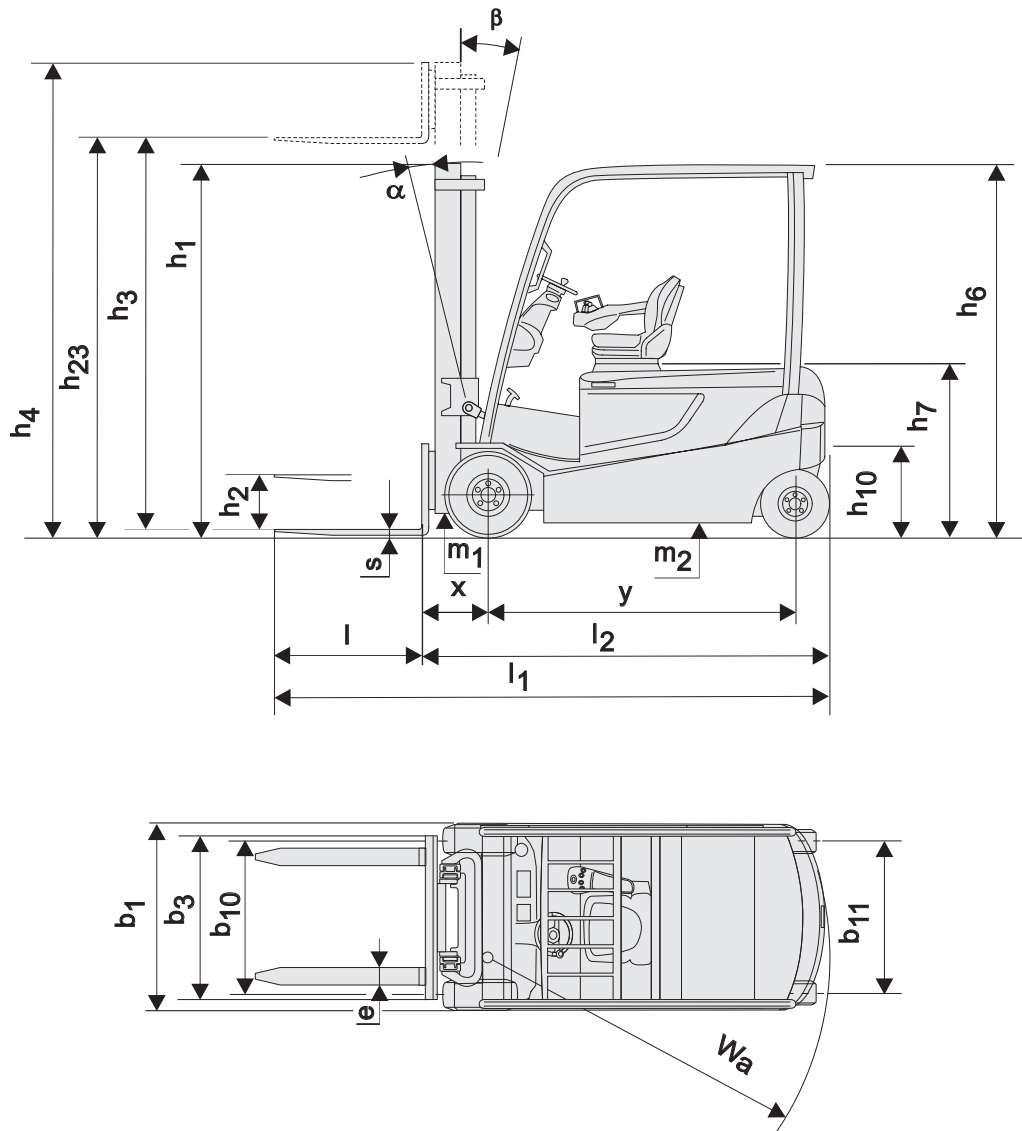
Master dimensions and rated capacities

Model			V					FV				FW				FSV					FSW						
8FBMKT30, 8FBMT30	Lift height	h_{23}	3005	3345	3745	4045	4545	3045	3345	3745	4045	3045	3345	3745	4045	4345	4745	5045	5545	6045	6545	4395	4745	5045	5545	6045	6545
	Lift	h_3	2960	3300	3700	4000	4500	3000	3300	3700	4000	3000	3300	3700	4000	4300	4700	5000	5500	6000	6500	4350	4700	5000	5500	6000	6500
	Height, mast lowered	h_1	2215	2395	2585	2835	3085	2125	2255	2585	2835	2185	2355	2555	2755	2135	2235	2395	2585	2835	3085	2185	2305	2405	2605	2755	2955
	Height, mast extended ¹⁾	h_4	3705	4045	4445	4745	5245	3740	4040	4440	4740	3675	3955	4355	4615	4930	5320	5630	6130	6630	7130	5005	5355	5655	6155	6655	7255
	Height, mast extended ²⁾	h_4	4160	4500	4900	5200	5700	4200	4500	4900	5200	4200	4500	4900	5200	5500	5900	6200	6700	7200	7700	5550	5900	6200	6700	7200	7700
	Free lift, without load backrest	h_2	125	125	125	125	125	1395	1515	1845	1845	1510	1700	1900	2040	1550	1650	1810	2000	2250	2500	1530	1650	1750	1950	2100	2300
Free lift, with load backrest	h_2	125	125	125	125	125	935	1055	1385	1385	985	1155	1355	1555	980	1080	1240	1430	1680	1930	985	1105	1205	1405	1555	1755	

1) Without load backrest.

2) With load backrest; Height of standard load backrest is 1200 mm.

Pneumatic shaped cushion tyre			V					FV				FW				FSV					FSW						
8FBMKT30, 8FBMT30	Tilt range, forward	deg	4,5	4,5	4,5	4,5	4,5	4,5	4,5	4,5	4,5	4,5	4,5	4,5	4,5	4,5	4,5	4,5	4,5	4,5	4,5	4,5	4,5	4,5	4,5	4,5	4,5
	Tilt range, backward	deg	8	8	8	8	6	8	8	8	8	8	8	8	8	6	6	6	6	6	6	6	6	6	6	6	6
	Load capacity at 500 mm LC	kg	3000	3000	3000	3000	3000	3000	3000	3000	3000	3000	3000	3000	3000	3000	2930	2880	2670	2165	1800	3000	2930	2880	2670	2165	1800
8FBMT30	Tilt range, forward	deg	4,5	4,5	4,5	4,5	4,5	4,5	4,5	4,5	4,5	4,5	4,5	4,5	4,5	4,5	4,5	4,5	4,5	4,5	4,5	4,5	4,5	4,5	4,5	4,5	
	Tilt range, backward	deg	8	8	8	8	6	8	8	8	8	8	8	8	8	6	6	6	6	6	6	6	6	6	6	6	
	Load capacity at 500 mm LC	kg	3000	3000	3000	3000	3000	3000	3000	3000	3000	3000	3000	3000	3000	2950	2900	2850	2670	2190	2080	2950	2900	2850	2670	2190	2080



Electric powered forklift 3.5 ton

Truck specifications						8FBMT35
Identification	1.1	Manufacturer				TOYOTA
	1.2	Model				8FBMT35
	1.3	Drive				Electric
	1.4	Operator type				Rider seated
	1.5	Load capacity/rated load	Q	kg		3500
	1.6	Load centre	c	mm		500
	1.8	Load distance, centre of drive axle to fork	x	mm		440
	1.9	Wheelbase	y	mm		1720
	Weight	2.1	Service weight		kg	
2.2		Axle load, with load, front/rear		kg		8048/1045
2.3		Axle load, without load, front/rear		kg		2632/2961
Tyres	3.1	Tyre: C=Cushion, SE=Super elastic, PN=Pneumatic, TW=Twin				SE
	3.2	Tyre size, front				23x10-12
	3.3	Tyre size, rear				18x7-8
	3.5	Wheels, number front/rear (x=driven wheels)				2x/2
	3.6	Track width, front	b_{10}	mm		946
	3.7	Track width, rear	b_{11}	mm		940
	Dimensions	4.1	Tilt of mast/fork carriage forward/backward	α/β	deg	
4.2		Height, mast lowered	h_1	mm		2395
4.3		Free lift	h_2	mm		125
4.4		Lift	h_3	mm		3300
		Lift height	h_{23}	mm		3345
4.5		Height, mast extended	h_4	mm		4045
4.7		Height of overhead guard (cab)	h_6	mm		2215
4.8		Seat height/stand height	h_7	mm		1143
4.12		Coupling height	h_{10}	mm		500
4.19		Overall length	l_1	mm		3479
4.20		Length to face of forks	l_2	mm		2479
4.21		Overall width	b_1	mm		1195
4.22		Fork dimensions	s/e/l	mm		45x125x1000
4.23		Fork carriage DIN 15 173, class/type A, B				IIIA
4.24		Fork-carriage width	b_3	mm		1070
4.31		Ground clearance, with load, below mast	m_1	mm		95
4.32		Ground clearance, centre of wheelbase	m_2	mm		127
4.33		Aisle width for pallets 1000 x 1200 crossways	A_{st}	mm		3808
4.34	Aisle width for pallets 800 x 1200 lengthways	A_{st}	mm		4007	
4.35	Turning radius	W_a	mm		2167	
4.36	Internal turning radius	b_{13}	mm		532	
Performance data	5.1	Travel speed, with/without load		km/h		19/20
	5.2	Lift speed, with/without load		m/s		0,37/0,55
	5.3	Lowering speed, with/without load		m/s		0,56/0,45
	5.5	Drawbar pull, with/without load		N		8900
	5.6	Max. drawbar pull, with/without load		N		19000
	5.7	Gradeability, with/without load		%		11/21
	5.8	Max. gradeability, with/without load		%		19/27
	5.9	Acceleration time, with/without load		s		4,9/4,3
	5.10	Service brake				Mechanical/hydraulic
	Electric motor	6.1	Drive motor rating S2 60 min		kW	
6.2		Lift motor rating S3 15%		kW		25,5
6.3		Battery acc. to DIN 43 531/35/36 A, B, C, no				43536 A
6.4		Battery voltage, nominal capacity K5		V/Ah		80/700
6.5		Battery weight		kg		1863
Others	8.1	Type of drive control				AC
	8.2	Operating pressure for attachments		bar		160
	8.3	Oil volume for attachments		l/min		40
	8.4	Sound level at the driver's ear according to EN 12 053		dB(A)		68,8

Performance data and dimensions are nominal and subject to tolerances.
 Specifications are subject to change without notice.
 Please obtain the latest specifications before contracting products.

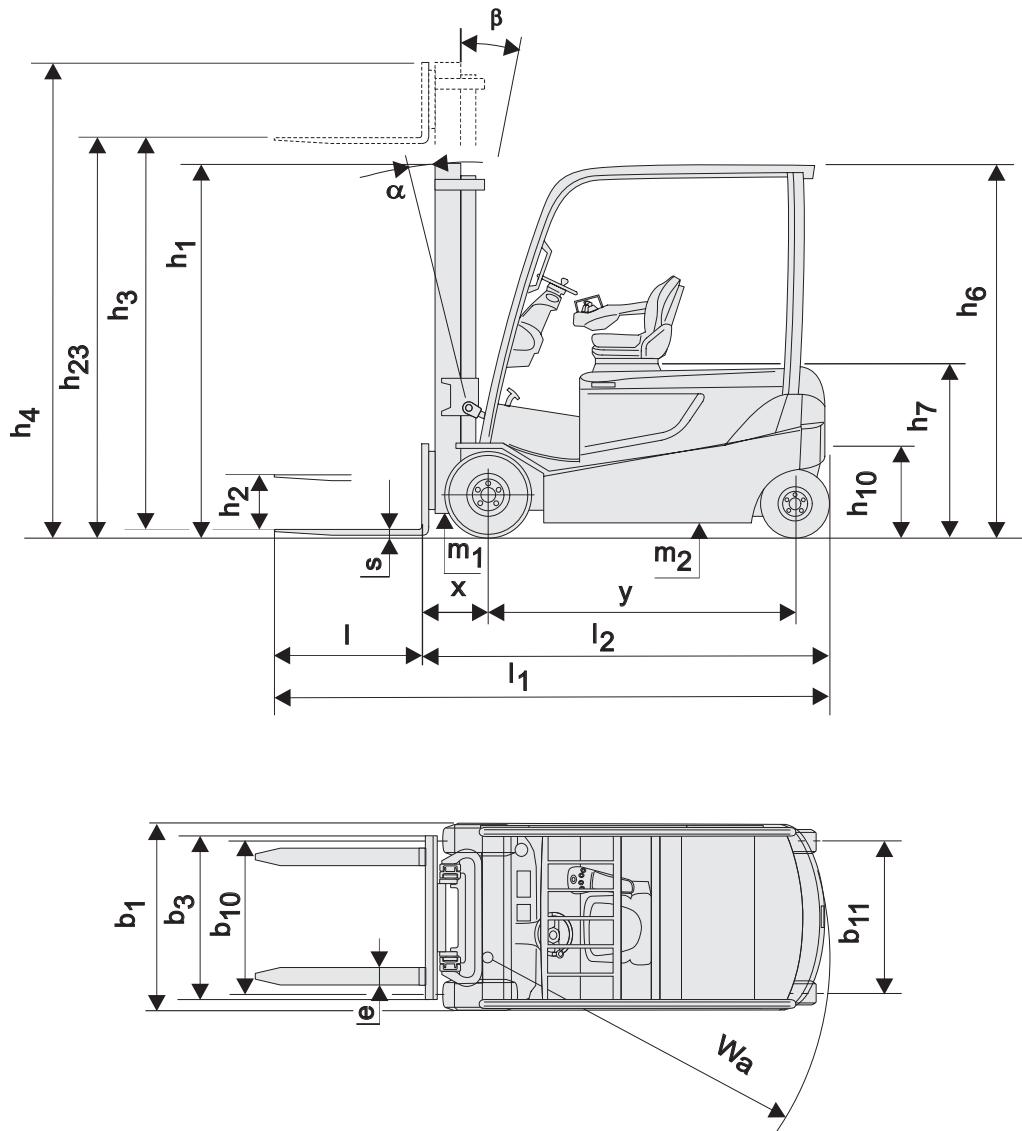
Most dimensions and rated capacities

Model			V					FV				FW				FSV					FSW						
8FBMT35	Lift height	h_{23}	3005	3345	3745	4045	4545	3045	3345	3745	4045	3045	3345	3745	4045	4345	4745	5045	5545	6045	6545	4395	4745	5045	5545	6045	6545
	Lift	h_3	2960	3300	3700	4000	4500	3000	3300	3700	4000	3000	3300	3700	4000	4300	4700	5000	5500	6000	6500	4350	4700	5000	5500	6000	6500
	Height, mast lowered	h_1	2215	2395	2585	2835	3085	2125	2255	2585	2835	2185	2355	2555	2755	2215	2395	2585	2835	3085	3335	2185	2305	2405	2605	2755	2955
	Height, mast extended ¹⁾	h_4	3705	4045	4445	4745	5245	3740	4040	4440	4740	3675	3955	4355	4615	5030	5430	5730	6230	6730	7230	5005	5355	5655	6155	6655	7255
	Height, mast extended ²⁾	h_4	4160	4500	4900	5200	5700	4200	4500	4900	5200	4200	4500	4900	5200	5500	5900	6200	6700	7200	7700	5550	5900	6200	6700	7200	7700
	Free lift, without load backrest	h_2	125	125	125	125	125	1395	1515	1845	1845	1510	1700	1900	2040	1530	1710	1900	2150	2400	2650	1530	1650	1750	1950	2100	2300
	Free lift, with load backrest	h_2	125	125	125	125	125	935	1055	1385	1385	985	1155	1355	1555	1060	1240	1430	1680	1930	2180	985	1105	1205	1405	1555	1755

1) Without load backrest.

2) With load backrest; Height of standard load backrest is 1200 mm.

Pneumatic shaped cushion tyre			V					FV				FW				FSV					FSW						
8FBMT35	Tilt range, forward	deg	4,5	4,5	4,5	4,5	4,5	4,5	4,5	4,5	4,5	4,5	4,5	4,5	4,5	4,5	4,5	4,5	4,5	4,5	4,5	4,5	4,5	4,5	4,5	4,5	4,5
	Tilt range, backward	deg	8	8	8	8	6	8	8	8	8	8	8	8	8	6	6	6	6	6	6	6	6	6	6	6	6
	Load capacity at 500 mm LC	kg	3500	3500	3500	3500	3500	3300	3300	3300	3300	3300	3300	3300	3300	3500	3500	3440	3320	2790	2250	3500	3500	3440	3320	2790	2250



Standard equipments:

- Toyota SAS (System of Active Stability)
- Toyota AC power system
- Toyota ORS seat (Operator Restraint System)
- Seat mounted hydraulic minilevers
- Wide visible mast (MFH:3300)
- Long forks (length:1000 mm)
- Long forkbar (length: 1070 mm)
- Load backrest (height: 1200 mm)
- 3 way valves
- Wet disc brakes
- Wide brake pedal
- Pneumatic shaped cushion tyres
- Full hydraulic power steering
- Digital Multifunction Display with wheel indicator
- Memory tilt steering column
- Emergency stop button in armrest



TP-Technical Publications, Sweden — 745558-040, 1311